

MONTHLY MEMBERSHIP PROGRESS REPORT

LOCATION WISCONSIN

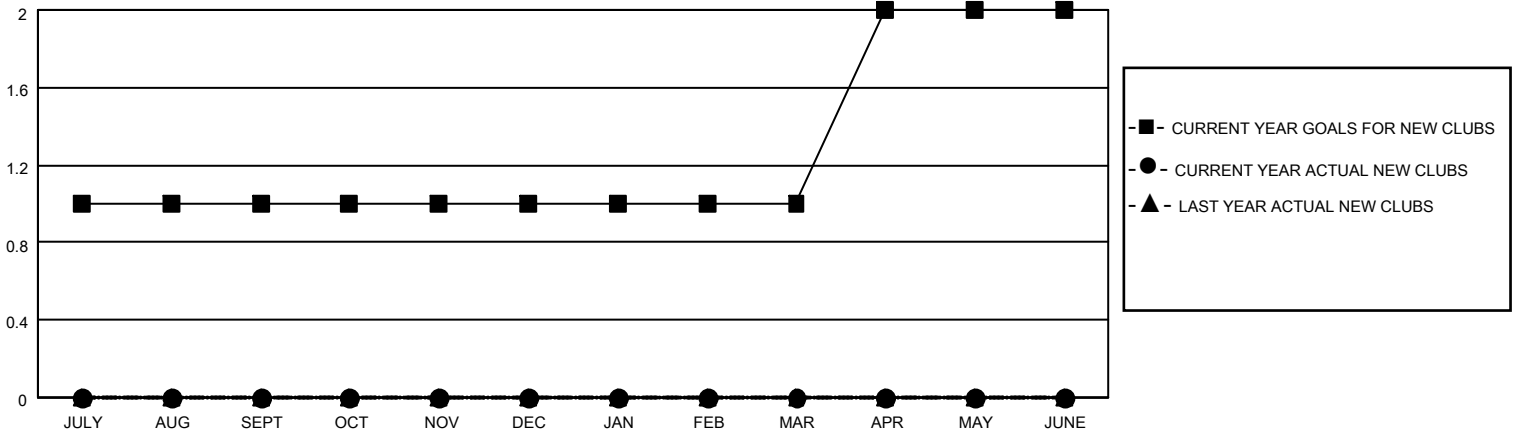
District 27 D1

Results as of: 2/28/2023

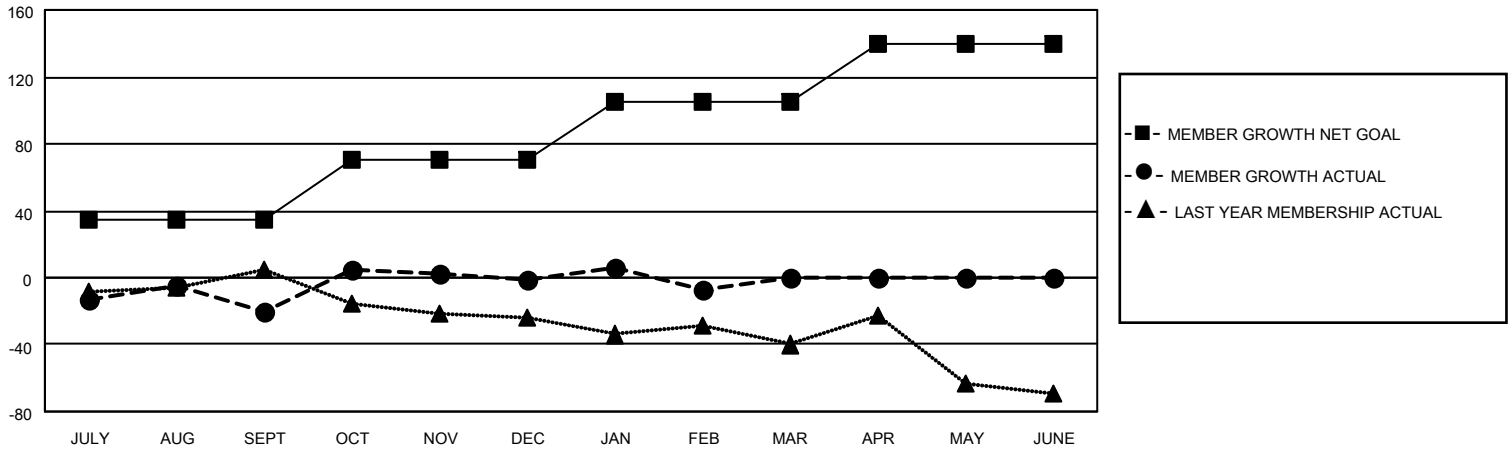
Clubs			
RESULTS FOR 2022-2023			
QUARTER	NEW CLUB GOAL	NEW CLUBS	DROPPED CLUBS
JULY/AUG/SEPT	1	0	1
OCT/NOV/DEC	0	0	0
JAN/FEB/MAR	0	0	0
APR/MAY/JUNE	1	0	0

Members			
RESULTS FOR 2022-2023			
QUARTER	MEMBER GROWTH NET GOAL	MEMBER GROWTH ACTUAL	DROPPED MEMBERS ACTUAL (including transfers)
JULY/AUG/SEPT	35	44	61
OCT/NOV/DEC	35	52	31
JAN/FEB/MAR	35	29	31
APR/MAY/JUNE	35	0	0

GOALS AND ACTUAL NEW CLUBS CUMULATIVE



GOALS AND ACTUAL MEMBERS CUMULATIVE



DROPPED CLUBS: 1	
DROPPED MEMBERS	
DECEASED	21
CLUB CANCELLED	11
OTHER	91
TOTAL	123

34 CLUBS OF 59 ADDED 1 OR MORE NEW MEMBERS

[CLICK HERE FOR CUMULATIVE MEMBERSHIP DATA](#)

<u>GENDER DISTRIBUTION</u>	
MALE	1,433 (68.66%)
FEMALE	653 (31.29%)
NON BINARY	0 (0.00%)
PREFER NOT TO ANSWER	1 (0.05%)
TOTAL FAMILY UNIT MEMBERS	469
FAMILY MEMBERS PAYING HALF DUES	238